

BIOACTIVE. MOISTURE FRIENDLY. MARGIN INTEGRITY. EASY TO PLACE.



CHOOSE THE DELIVERY STYLE THAT IS RIGHT FOR YOU

Champ® is a bioactive, resin-based hydrophilic sealant that readily penetrates into and adapts to the pits and fissures, tightly seals at the margins and has greater strength and durability than traditional or GI-based materials. These properties make Champ less technique-sensitive and easier to place.

BIOACTIVE

Champ's hydrophilic resin enables increased and continuous ionic exchange, allowing calcium, phosphate, and fluoride ions to bind to minerals in the tooth, forming a strong resin-hydroxyapatite complex that seals out microleakage. Champ's bioactive process mimics nature and remineralization.

MOISTURE FRIENDLY

It's hard to keep a tooth surface dry and contaminant-free, especially when working with kids. Champ tolerates moisture, making it easy to bond to the tooth to ensure a long-lasting seal.

MARGIN INTEGRITY

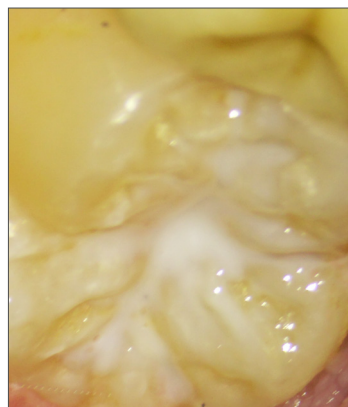
Champ is durable and long-lasting. Perhaps even more important, is how well it adapts to and seals the margins, helping eliminate microleakage in areas where the sealant can de-bond or lift off.

EASIER TO PLACE

Champ is lightly filled (37%) allowing it to flow smoothly over the prepared surface, penetrating into cracks, pits and fissures. Even the thinnest edges adhere tightly at the margins.

Choose between:

- **Multi-patient Syringe:** Traditional delivery system
- **Single-patient LolliPack:** Helps eliminate the risk of cross-contamination.



Tight margin adaptation

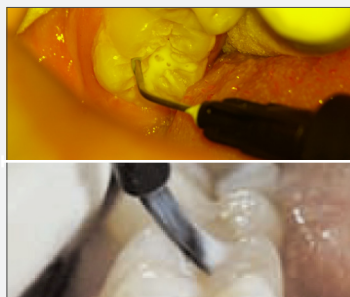


Champ blends in, yet is easily seen

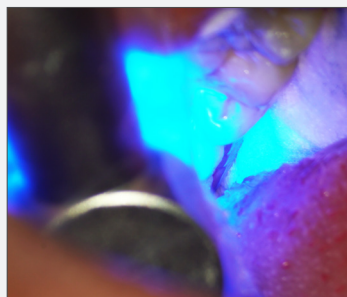
CHAMP MAKES SEALANT PLACEMENT FASTER AND EASIER!



ETCH: Clean tooth. Etch with Centrix Onyx™ Etch for 15 seconds. Onyx is easy to see, and rinses away completely.



APPLY: Using the Champ syringe, apply traditionally. Using the Champ LolliPack, apply with included Benda Brush. The fibers flow Champ into the tiniest of spaces.



CURE: Light cure. High energy LED lights can cure as fast as 5 seconds.



SEALED! Champ cures white – easy to see; easy to identify margin integrity. Champ light cures to a natural white.

NOTE: For best, longer-lasting results, and more-effective etching, we recommend cleaning the tooth/teeth before the procedure using prophyl paste without fluoride.

CHAMP® PIT & FISSURE SEALANT

The right material for fast, effective sealants!

Only Champ delivers all of these benefits for today's busy hygiene practice:

- **Bioactive** resin that works with the tooth's own bio-mechanical properties for a long-lasting, tightly sealed, highly durable seal.
- **Moisture friendly**, Champ is easily placed, tolerant in 'wet' environment and stays in place.
- **Convenient** packaging allows you to choose the delivery format that is right for you and your patient.

MAKES PREVENTION EASIER

Contains No Bisphenol A, No Bis-GMA, No Bis-DMA

Physical Properties:

Compressive strength: 35,000 psi (240 MPa)

Diametral tensile strength: 6,300 (43 MPa)

Film thickness: 12 microns

Contraindications:

Champ is contraindicated in patients who are allergic to any of its ingredients. Do not use on dental caries.



ORDERING INFORMATION

Single-patient LolliPack®

REF 360116 16 x 0.25 mL LolliPack

REF 360120 64 x 0.25 mL LolliPack

Multi-patient Syringe Delivery

REF 310033 Champ Syringe Kit
4 x 1.2 mL Syringe, 20 x 22 ga Luer Lock Needle Tip

REF 310034 1 x 1.2 mL Syringe, 5 x 22 ga Luer Lock Needle Tip

REF 310032 20 x 22 ga Luer Lock Needle Tip

REF 640001 100 x 22 ga Luer Lock Needle Tip

COMPLEMENTARY PRODUCTS OFTEN ORDERED WITH CHAMP

Onyx™ 40% Phosphoric Acid Etching Gel

REF 310053 6 x 1.2 mL Syringe, 30 x 22 ga Luer Lock Needle Tip

REF 310054 15 x 1.2 mL Syringe, 50 x 22 ga Luer Lock Needle Tip

FluoroDose® Fluoride Varnish – Unit-Dose LolliTray™

120-ct. 600-ct.

REF 360086 **REF 360078** Mint, 0.3 mL

REF 360087 **REF 360077** Bubble Gum, 0.3 mL

REF 360107 **REF 360108** Melon, 0.3 mL

REF 360110 **REF 360111** Cherry, 0.3 mL

REF 360137 **REF 360138** Caramel, 0.3 mL

Exposé® Caries Indicator on a Stick

REF 310334 Fine, 100-ct., Blue

REF 310330 Fine, 576-ct., Blue

REF 310335 Extra Fine, 100-ct., Blue

REF 310331 Extra Fine, 576-ct., Blue

Call **800.235.5862** or contact your preferred dealer.